

General Information

Regular maintenance and servicing is the responsibility of the owner.

Regular routine maintenance not only helps to prevent unnecessary 'breakdowns' and inconvenience, but enhances the 'remarketing' or resale value of the vehicle.

When left-hand or right-hand is used in the text, this refers to the left-hand side or right-hand side of the vehicle, viewed from the rear.

This handbook describes every option and model variant available and therefore some of the items covered may not apply to your particular vehicle.

Jaguar Diagnostic System

Many of the vehicle systems are controlled by complex electronic devices. Specialist equipment is required to trace and rectify faults in the systems and ensure that only faulty components are repaired or renewed.

Caution: Severe damage to the electrical system and electronic components can occur if any attempt is made to diagnose faults in the electrical system using conventional diagnostic equipment (for example, the use of test lamps or low impedance voltmeters). The fitting of any electrical accessory should only be entrusted to a Jaguar Dealer.

Accessories

A full range of Jaguar Engineering approved accessories including safety, stowage, touring, leisure and lifestyle products are just some of those available from your Jaguar Dealership.

Please ask your Jaguar Dealer for an up-to-date brochure so you can select your requirements from the latest range.

Jaguar Dealers

Jaguar Dealers are chosen with care. Each is dedicated to providing a Sales, Service and Spare Parts facility of the highest standard.

Jaguar Dealers are provided with full technical support from the factory, with comprehensive training for all their technicians. Dealers' workshops operate to a high standard and have all the necessary tools and equipment essential to maintain or repair Jaguar vehicles.

Genuine Jaguar Parts and Accessories

Your Jaguar Dealer can supply you with genuine replacement parts and accessories which are fully approved to Jaguar's original equipment specification. This will ensure that the safety and performance of your vehicle is maintained for your complete peace of mind.

Please note that fitment of non-genuine parts may invalidate the vehicle warranty if a subsequent fault occurs due to fitting sub-standard replacement parts or accessories.

1-2 Introduction

Jaguar Parts Distribution Service

Jaguar Dealers stock a large number of parts to keep your vehicle maintained and back on the road as quickly as possible. Their service is backed-up by Jaguar's central parts warehouse in Coventry, England, providing next day delivery to most of Europe's Dealers and world-wide within two to three days.

Locking Wheel Nuts

In certain markets vehicles are fitted with locking wheel nuts as standard. See **Wheel Changing and Jacking** in SECTION 4 of the Vehicle Care Handbook.

For other vehicles, locking wheel nuts are available as an accessory. These may vary from the type of locking wheel nut fitted as standard.

After fitting, wheel re-balancing may be necessary and subsequently the locking nut must always be fitted in the same position.

Vehicle Literature Brochures

The vehicle literature is in two separate packs within the vehicle.

Driver Literature Pack

This pack is in the front passenger's glove compartment and comprises the following:

Driver's Handbook.
Audio System Handbook.
Navigation Handbook (When navigation system is fitted).
Quick Reference Guide.

Vehicle Care Literature Pack

This pack is in the luggage compartment and comprises the following:

Vehicle Care Handbook.
Passport to Service Booklet (Except Mexico)
Service and Record Warranty Book (Mexico only)

Fuel

See **Fuel Tank Filling** on page 4-11 and also **Fuel Requirements** in SECTION 6 of the Vehicle Care Handbook. 'PREMIUM UNLEADED FUEL ONLY' is clearly marked adjacent to the fuel filler cap.

Electrical Accessories

The fitting of any electrical accessory **should only** be entrusted to a Jaguar Dealer. See **Electrical Accessories** in SECTION 7 of the Vehicle Care Handbook. This information must be observed before fitting any accessories.

Regular Checks

In the interests of safety and reliability, it is advisable to carry out checks at regular intervals, i.e. daily, weekly and monthly. Always check the vehicle thoroughly before starting on a long journey.

See **Regular Checks** in SECTION 3 of the Vehicle Care Handbook.

Emergency Starting

Vehicles with automatic transmissions cannot be tow started. See **Emergency Starting** in SECTION 4 of the Vehicle Care Handbook.

Window Marking

A worthwhile precaution is to have the vehicle registration number etched into each window glass by a Jaguar Dealer.

Mobile/portable telephones



WARNING:

Using a mobile/portable telephone without an exterior antenna is not recommended when driving as the electro-magnetic fields produced can cause malfunctions with the vehicle electronic systems.

Check the laws and regulations on the use of cellular telephones in the areas where you drive. Always obey them. Also, give full attention to driving.

Use hands-free operation (if fitted) and pull off the road and park before making or answering a call if driving conditions so require.

Regular Servicing

Each vehicle is given a full 'Pre-delivery Inspection' to ensure that all systems function correctly and the vehicle meets its specification.

Failure to carry out maintenance at the recommended intervals could result in deterioration of the vehicle performance and possible infringement of regulations.

USA and Canada: Jaguar Dealers will arrange for appointments on a mileage/distance or time interval basis to ensure that all routine and corrective maintenance work is undertaken and recorded in the 'Passport to Service' Booklet. This booklet not only contains a record of vital information, but also information

about warranties, Jaguar Cars, Jaguar Car Clubs, Tyre Manufacturers and change of ownership or address vouchers.

Mexico: Jaguar Dealers will arrange for appointments on a mileage/distance or time interval basis to ensure that all routine and corrective maintenance work is undertaken and recorded in the Service Record and Warranty Book. This booklet not only contains a record of vital information, but also information about warranty and a change of ownership card.

Warranties (USA and Canada)

The 'Passport to Service' Booklet contains warranties applicable to the vehicle, which include:

- The Limited Vehicle Warranty.
- The Emission Control System Warranty and covered parts list.
- The Corrosion Warranty.

Note: Tyres are not warranted by Jaguar Cars, but by the specific manufacturer of the tyres on the vehicle. Details of tyre warranties are included in the vehicle literature pack.

Warranties (Mexico)

The Service Record and Warranty Book contains warranties applicable to the vehicle, which include:

- The Limited Vehicle Warranty.
- The Emission Control System Warranty and covered parts list.
- The Corrosion Warranty.

1-4 Introduction

Tyre Information

All tyres fitted to vehicles sold in the USA and Mexico have data, necessary to conform to the USA Federal Regulations, moulded onto the tyre.

The data on the tyres gives the following information;

Maximum Pressure.

Maximum Load Rating.

Further information is given on the tyre recommendation label located on the underside of the centre console storage compartment lid as follows;

Vehicle Capacity Weight.

Designated Seating Capacity.

Designated Seating Distribution.

Recommended Tyre Pressures.

Recommended Tyre Size.

Take particular note of **WARNINGS** and **Cautions** given throughout this handbook.



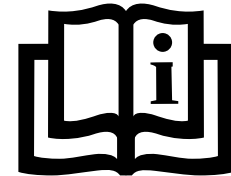
WARNING:

Procedures which must be followed precisely to help avoid the risk of personal injury.

Caution: Procedures which must be followed precisely to reduce the possibility of damage to the vehicle and resultant risk of personal injury or inconvenience.

Warning symbols on the vehicle

On encountering the warning triangle or open book symbol on the vehicle, it is important that you consult the relevant section of this handbook and the Vehicle Care Handbook before touching this part of the vehicle or attempting adjustments of any kind.



Safety Precautions



WARNING:

1. Many liquids and other substances used in vehicles are poisonous and should never be consumed and must be kept away from open wounds. These substances include anti-freeze, brake fluid, fuel, windscreen washer additives, lubricants and various adhesives.
2. The presence of any unusual fumes (e.g. petrol or exhaust fumes) in the passenger compartment and/or luggage compartment should be corrected immediately by a Jaguar Dealer. If you must drive under these conditions do so only with all windows fully open.
3. Any modifications to the fuel system not specifically designed for this Jaguar are prohibited. Such modifications in some circumstances could result in a fire. All service actions must be entrusted to a Jaguar Dealer.
4. Alterations to the electrical system, including the fitting of accessories not designed for this Jaguar, will cause damage to the electrical circuits and systems. In some circumstances this could result in a malfunction or fire. All accessory work should be entrusted to a Jaguar Dealer.
5. No attempt should be made to repair a fuse that has blown. Always install a fuse of the correct amperage (see Fuse Ratings and Circuits in SECTION 4 of the Vehicle Care Handbook). Failure to comply with the above may cause a fire hazard or serious damage elsewhere in the electrical circuit.

California Proposition 65 Warning



WARNING:

Engine exhaust, some of its constituents, and certain vehicle components contain or emit chemicals known to the State of California to cause cancer and birth defects or other reproductive harm.

Reporting Safety Defects (USA only)

If you believe your vehicle has defect which could cause a crash or could cause injury or death, you should immediately inform the National Highway Traffic Safety Administration (NHTSA) in addition to notifying Jaguar Cars.

If NHTSA receives similar complaints, it may open an investigation, and if it finds that a safety defect exists in a group of vehicles, it may order a recall and remedy campaign. However, NHTSA cannot become involved in individual problems between you, your Dealer, or Jaguar Cars.

To contact NHTSA, you may either call the Auto Safety Hotline toll-free at 1-800-424-9393 (or 355-0123 in Washington, D.C. area) or write to: NHTSA, U.S. Department of Transportation, Washington, D.C. 20590.

To contact Jaguar Cars, call (201) 818-8100.

You can also obtain other information about motor vehicle safety from the Hotline.

1-6 Introduction

Safety, Warning and Caution Labels

Note: Do not remove any safety, caution or warning labels from the vehicle.

Braking System

The brake fluid caution symbol (A) is moulded into the master cylinder filler cap.

Brake system warning information is moulded into the master cylinder reservoir and states:

WARNING – CLEAN FILLER CAP BEFORE REMOVING. USE ONLY JAGUAR SUPER DOT 4 BRAKE FLUID FROM A SEALED CONTAINER.

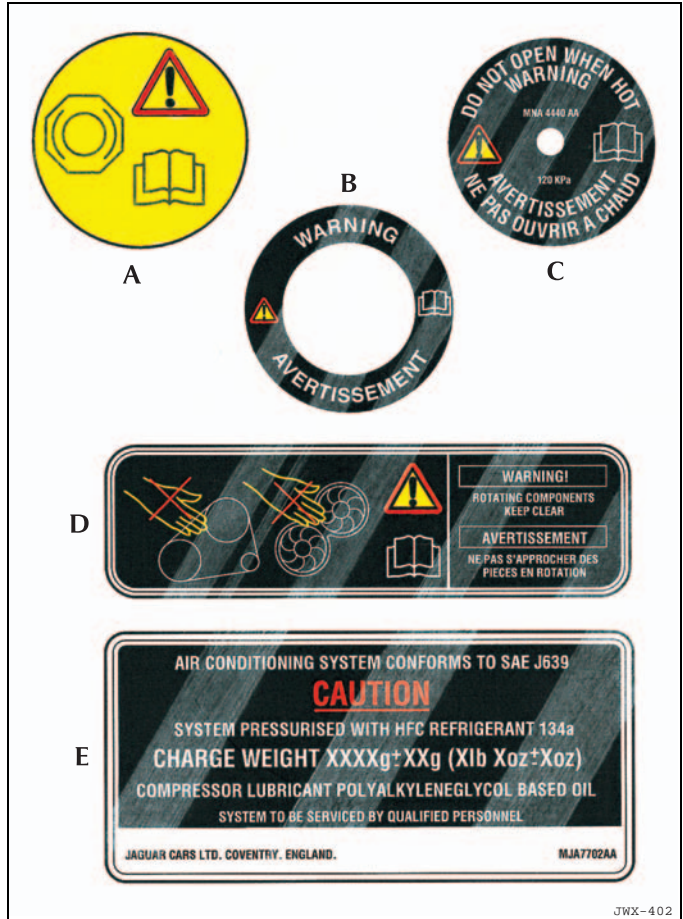
Power Steering System

The label (B) is located on the reservoir filler cap and states: WARNING.

See **Checking and Replenishment** in SECTION 3 of the Vehicle Care Handbook for information on topping up the power steering system.

Cooling System

The header tank label (C) is located on the filler cap and states: WARNING – DO NOT OPEN WHEN HOT.



Rotating Components

A label **(D)** is located on the fan shroud and states:

WARNING – ROTATING COMPONENTS – KEEP CLEAR.

Climate Control System

The label **(E)** located under the bonnet on the left-hand side states:

CAUTION – System pressurised with HFC Refrigerant 134a. System to be serviced by qualified personnel.

Warning and Information Messages

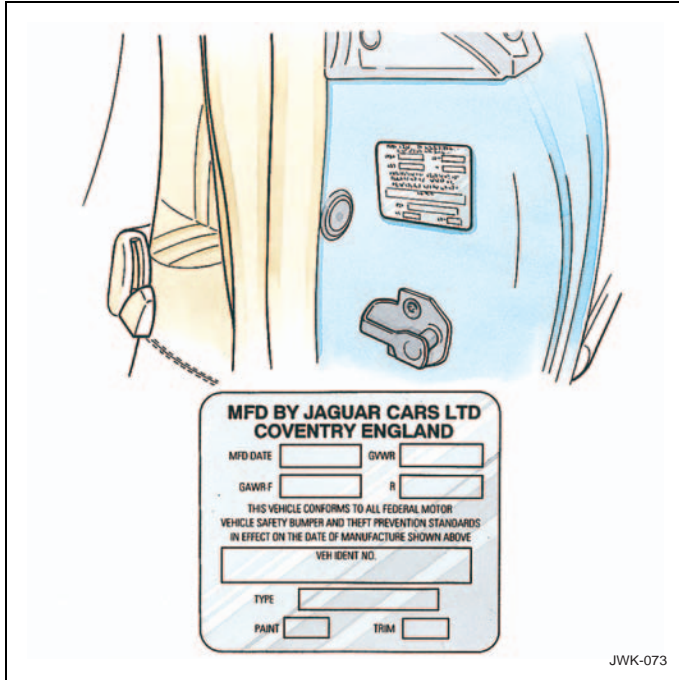
Warning and information messages are displayed on the message centre which is located within the speedometer.

As well as odometer and trip computer information, status and warning messages may be displayed (along with a red or amber priority indicator to show the type of message), to alert the driver to a situation or vehicle status which may require attention.

Throughout the Handbook, references to messages are made as shown in the example below:

Message: **Hood Open** Priority Indicator: **Red**

1-8 Introduction



GVRW – Gross vehicle weight rating.

GAWR F – Gross front axle weight rating.

GAWR R – Gross rear axle weight rating.

Paint – Paint code.

Trim – Trim code.

Vehicle Identification and Certification Label

The USA, Canadian and Mexican Certification label is adhered to the left-hand door post above the door striker plate and is visible when the door is opened.

The label indicates the month and year of manufacture and the Vehicle Identification Number (VIN), it also provides paint and trim codes.

It is essential that the Vehicle Identification Number is quoted in all correspondence and when ordering parts.

The number is also on a plate visible through the windscreen and on a bar coded label adhered to the left-hand front door shut face edge.

Engine Number

V8: Stamped on a raised pad on the front of the engine block near the thermostat housing.

Automatic Transmission Number

The number is located on the left-hand side of the automatic transmission casing.